

everyday
EPIPHANIES



at **AVONDALE** *all are welcome to...* *connect* with God and others.
grow together in faith and love.
serve the world for Jesus Christ.

Restrooms

If you need a restroom, exit the sanctuary through the door at the front to the right of the pulpit. The women's restroom is just off the foyer. The men's restroom is down the hallway from the foyer on the right.

Nursery

We welcome children of all ages in worship; however, a nursery is available for infants and toddlers under four years old who may need it. Please see an usher for assistance.

Hearing Support

We have hearing assistive technology that connects via bluetooth available. Check with an usher for an instruction card to help you connect.

Visual Support – Large Print Hymnals & Bulletins

Large print hymnals and bulletins are available. The hymnals are located on the side table to the right of the pulpit at the front of the sanctuary. Ushers can help you locate both the hymnals and the bulletins as needed.

Connect + Grow + Serve



Use this QR code (or www.AvonUMC.net/HereIAm) to go online to let us know you're here, enter a prayer request, and/or make a contribution. You can also access volunteer opportunities, wish lists to support our local outreach, and/or sign up to provide flowers in honor/memory of someone one Sunday on the altar in worship.

Floral Tribute

*The flowers on the altar are given to the glory of God
in honor of Pastor Malinda's 21st birthday by her parents, Eddy and Hilda Jowers.*

Fourth Sunday after the Epiphany | February 1, 2026

The word Epiphany comes from the Greek word epiphania, which means "manifestation." In basic terms, it means "a revealing" or "an 'aha' moment." It's about noticing when something becomes clear—especially when God shows up in ways we might not expect.

We celebrate Epiphany on January 6, remembering the visit of the magi, who followed a star and discovered God's love revealed in the Christ child. Their journey reminds us that God meets people wherever they are and draws them forward with light and hope.

The weeks that follow are known as the Season of Epiphany. During this season (this year that's January 6 – February 17) we listen and look for the many ways Christ—our guiding light—continues to be revealed in the world and in our everyday lives.

Prelude

Processional
George Whiting

Chiming of the Hour

Welcome & Opening Prayer

Rev. Malinda Weaver

Choral Call to Worship

Jubilate
George Chadwick

*** Call to Worship**

Pam Carter

Wonderful is the God who gathers together the poor, the meek, and the struggling.

Gather us in great God of creation.

Wonderful is the God who empowers the peacemakers and those hungry for justice.

Empower us, great God, to act justly ... to love mercy ... to walk humbly with you.

Wonderful is the God who encourages the merciful and the pure in heart.

Encourage us, great God, as we work together to reflect your love and light.

* Please rise in body or in spirit.

*** Opening Hymn No. 89**

Joyful, Joyful We Adore Thee

*** Affirmation of Faith | The Apostles' Creed**

I believe in God, the Father Almighty, maker of heaven and earth;
And in Jesus Christ his only Son, our Lord;
who was conceived by the Holy Spirit, born of the Virgin Mary,
suffered under Pontius Pilate, was crucified, dead, and buried;
the third day he rose from the dead; he ascended into heaven,
and sitteth at the right hand of God the Father Almighty;
from thence he shall come to judge the quick and the dead.
I believe in the Holy Spirit, the holy catholic[†] church,
the communion of saints, the forgiveness of sins,
the resurrection of the body, and the life everlasting. Amen.

*** Gloria Patri**

GREATOREX

Glory be to the Father and to the Son and to the Holy Ghost,
as it was in the beginning is now, and ever shall be, world without end.
Amen, Amen.

*** Ritual of Friendship**

Children's Moment

Larry Contri

*Following the Children's Moment, children (kindergarten through second grade)
will be escorted to Children's Church. Parents must pick up their child(ren) from the
first floor classroom after the worship service.*

Act of Centering No. 420

Breathe on Me, Breath of God (v. 1, 3)

Breathe on me, Breath of God, fill me with life anew,
that I may love what thou dost love, and do what thou wouldst do.
Breathe on me, Breath of God, till I am wholly thine,
till all this earthly part of me glows with thy fire divine.

[†] universal

Prayer for Illumination

Scripture

Matthew 5:1-12

Sermon

Turning the World Upside Down

Pastoral Prayer

Offering

The Beatitudes

George Chadwick

* Doxology

LASST UNS ERFREUEN

Praise God, from whom all blessings flow;

praise him, all creatures here below; Alleluia! Alleluia!

Praise God the source of all our gifts!

Praise Jesus Christ whose power uplifts! Praise the Spirit, Holy Spirit!

Alleluia! Alleluia! Alleluia!

The Great Thanksgiving

The Lord be with you.

And also with you.

Lift up your hearts.

We lift them up to the Lord.

Let us give thanks to the Lord our God.

It is right to give our thanks and praise.

*Pastor Malinda will continue by giving thanks
and remembering God's acts of salvation.*

Therefore, we join our voices with your people on earth
and all the company of heaven, giving praise to you ...

Ho - ly, ho - ly, ho - ly Lord; God of power and might. ____

Heav-en and earth are full of your glo - ry. ____ Ho -

san - na in the high-est! Ho - san - na in the high-est! Ho - san - na in the high -

est! ____ Blest is the one who comes ____ in the name of the Lord. ____ Ho -

san - na in the high-est! Ho - san - na in the high-est! Ho - san - na in the high - est!

Pastor Malinda will recall the institution of the Lord's Supper.

And now we give you thanks and praise,
 offering our very selves to you,
 as we proclaim the mystery of faith.

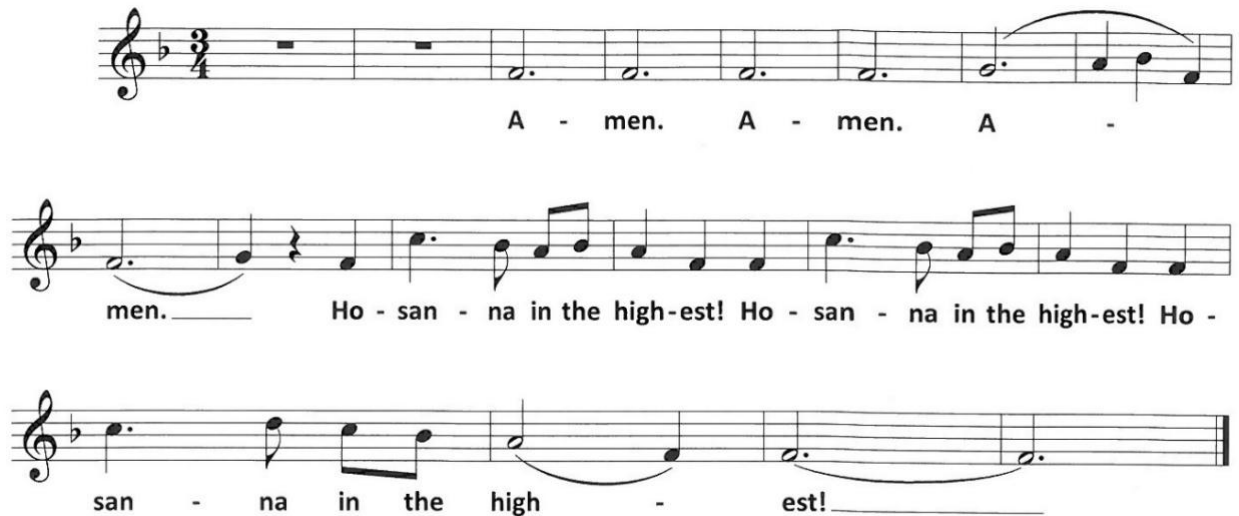
Christ has died, Christ is ris-en, Christ will

come a - gain. ____ Ho - san - na in the high-est! Ho - san - na in the high-est! Ho -

san - na in the high - est! ____

*Pastor Malinda will request the power of the Holy Spirit to come upon us
and praise the Trinity.*

For it is through Christ, in the power of the Holy Spirit, in your holy church
that all honor and glory is yours, Almighty God, now and forever.



The Lord's Prayer

Our father, who art in heaven, hallowed be thy name.

Thy kingdom come, thy will be done on earth as it is in heaven.

Give us this day our daily bread.

And forgive us our trespasses,

as we forgive those who trespass against us.

And lead us not into temptation, but deliver us from evil.

For thine is the kingdom, and the power, and the glory, forever. Amen.

Receiving the Bread and Cup

We believe Holy Communion is a gift from God to all people.

In The United Methodist Church everyone is welcome to receive Communion.

Gluten-free bread is available. Please inform the server of your needs.

Music during Communion

Introduction and Theme

George Chadwick

Prayer of Thanksgiving

Gracious God,
we give you thanks for this holy mystery
in which you have revealed yourself to us.
So now, empower us as we go forth
to faithfully bear your light in the world
as people of faith, friendship, and peace. Amen.

* Hymn of Praise No. 451

Be Thou My Vision

* Benediction

* Choral Benediction

Blest Are They

David Haas

* Postlude

Postlude in D

George Whiting



MUSIC NOTES

Today we hear music by the often-overlooked American composer, George Whitfield Chadwick (1854-1931). Educated at the prestigious New England Conservatory of Music, where he was later a professor, Chadwick also studied in Germany and France, where he came under the influence of the Impressionist and Realist movements in art and music. The composer of operas, symphonies, incidental works, and a large number of sacred pieces, his style is decidedly Romantic: expressive, lush, and sometimes sentimental. His *Jubilate*, composed in 1895, is very traditional and straightforward work, showing Chadwick at his most conservative. Far more sophisticated is his moving setting of *The Beatitudes*. Striking harmonic shifts and sensitive word painting highlight the beloved text drawn from Matthew's gospel.

Introduction and Theme, which we hear at the Offertory, is one of only a handful of compositions Chadwick wrote for the organ. The Prelude and Postlude are by his contemporary and associate, George Whiting (1840-1923). Head of the organ department at the New England Conservatory, Whiting left behind a relatively small body of works, primarily for organ and piano, in a decidedly dramatic, pictorial style. His serviceable, tuneful music is very much a product of its time, rendering it somewhat quaint to modern sensibilities.

Connect + Grow + Serve

MONTHLY BOOK CLUB

Tuesday, February 10 | 6:30pm

Join us each month on the second Tuesday at 6:30pm at the church to dive into thought-provoking reads that center around faith, spirituality, religion, and more. For February, we're reading *The Book of Joy* by The Dalai Lama and Archbishop Desmond Tutu. Come with an open mind, a curious spirit, and maybe a friend or two.

MARDI GRAS PARADE

Saturday, February 14

Let the good times roll as we join in the fun of Mom's Basement's Annual Mardi Gras Chicken Parade! We'll be riding together on our church float as we step off in Avondale at 6:00pm. Lineup starts at 4:00pm—so grab your beads, feathers, and festive spirit! If you want to join our flock, email Diane Robinson (d.robinson1@att.net) or David Majors (demaj@bellsouth.net).

WOMEN'S COFFEE

Wednesday, February 18 | 9:30am

Ladies—come as you are, bring a friend, and let's enjoy some great company together! Our coffee gatherings happen each month on the third Wednesday at General (3813 Clairmont Avenue, Birmingham 35222).

ASH WEDNESDAY WORSHIP

Wednesday, February 18 | 6:00pm

Ash Wednesday marks the first day of the season of Lent which is a time for growing through repentance, fellowship, prayer, fasting, and contemplation upon Jesus' sacrifice for all of us. Our service will be quiet, reflective, and meditative with the imposition of ashes, prayer, and hymns. All are welcome.

HAND TO HEART

Wednesdays, February 11 & 25 | 10:00am-12:00pm

Through stitches and prayer, Hand to Heart shares comfort with those in need. This prayer shawl ministry meets on the second and fourth Wednesdays of each month in the archive room (first floor) and welcomes both experienced needleworkers and those who want to learn. If you know someone who would be blessed by a prayer shawl, contact Barb Walker (205.672.9687).

WINTER NEEDS FOR OUR HOMELESS NEIGHBORS

When temperatures drop, small things make a big difference. Avondale Samaritan Place is collecting both winter essentials (*hand warmers, skull caps, gloves, and warm socks*) and our usual donation items (*body wipes, toothbrushes/paste, etc.*) for our homeless neighbors. Donations may be dropped off weekdays from 8:00–11:00am, brought to worship on Sundays, or sent directly to us through our Amazon wishlist—just scan the QR code in your bulletin.



500 40TH STREET, SOUTH • BIRMINGHAM, AL 35222-3310